

**Caplio\***

# ***Caplio Utility***

*for Windows*

**Operation Manual**

**English**

To ensure correct use of the product, read this manual carefully before use. Keep the manual handy for future use.



# Introduction

Thank you for purchasing a Ricoh product.

This manual explains the correct handling procedures and precautions for the product. To ensure the best performance from the product, please read the manual carefully before using the product. Keep the manual handy for future reference.

Ricoh Co., Ltd.

## Important

- Be sure to make a backup copy of important data. Data may be lost in the event of misoperation by the user or malfunction of the product.
- Ricoh Co., Ltd. assumes no liability for data created by the user using this product.
- Ricoh Co., Ltd. assumes no liability for damages caused by failure of the product, damages incurred due to loss of text or data, or any other damages arising from use of the product.

## Copyright

Reproduction or alteration of copyrighted documents, magazines, music and other materials, other than for personal, home or similarly limited purposes, without the consent of the copyright holder is prohibited.

- This publication may not be reproduced in whole or part without the express written permission of Ricoh. © 2001 Ricoh Co., Ltd.
- Ricoh reserves the right to change the contents of this publication without notice.
- Considerable care was taken in preparing this manual. If, however, you have any questions about any part of the manual, or note any mistakes or inaccuracies, please contact us at the address listed on the back cover.

Microsoft, MS and Windows are registered trademarks of Microsoft Corporation in the United States and other countries.

QuickTime is a trademark of Apple Computer, Inc. registered in the United States and other countries.

All other company and product names are registered trademarks and/or trademarks of their respective owners.

# What You Can Do Using This Software

## **Download images, Sound file and motion pictures and transfer files to the camera**

By connecting the camera to a PC, you can download recorded images, Sound file and motion pictures onto the PC, and you can also transfer images, Sound file (WAV files) and motion picture files (AVI files) stored in the PC to the camera.

# Contents

What You Can Do Using This Software.....	1
<b>Chapter 1 Preparing the Software .....</b>	<b>3</b>
Explanation of Software .....	3
System Environment .....	5
Installing the Software.....	6
Uninstalling the Software .....	10
<b>Chapter 2 Connecting the Camera to a PC.....</b>	<b>13</b>
Connecting the Camera to a PC using the USB Cable .....	13
Disconnecting the USB Cable .....	14
<b>Chapter 3 Using Caplio Utility .....</b>	<b>15</b>
Starting and Exiting Caplio Utility .....	15
Starting Caplio Utility.....	15
Exiting Caplio Utility .....	16
Functions of the Caplio Utility buttons .....	16
Saving Files in the Camera on the PC .....	17
Saving from the camera using the [Save from Camera] button .....	17
Transferring Files From the PC to the Camera .....	19
Transfer using the [Save to Camera] button.....	19
Other Functions (Camera Property).....	21
Name of the photographer (Camera Property).....	21
Entry Memo .....	22
<b>Chapter 4 Troubleshooting.....</b>	<b>23</b>
When the Camera Does Not Work Correctly .....	23
COM Port Settings for Windows 98/Me .....	24
Reinstalling Caplio RR1 Software (USB Driver).....	25
Restoring the device when recognized as an unknown device .....	25

# Chapter 1

## Preparing the Software

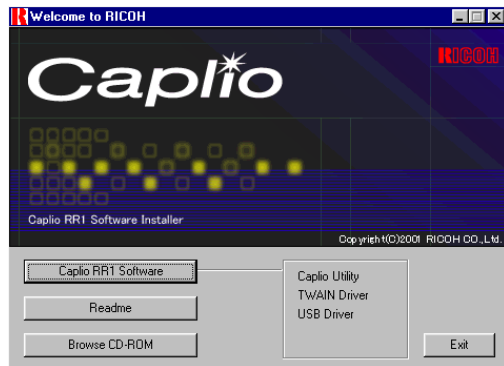
1

Preparing the Software

This chapter explains the preparations required to use the supplied software, such as the necessary system environment, installation of Caplio Utility, etc.

### Explanation of Software

The following initial screen is displayed when the CD-ROM is loaded.



### Caplio RR1 Software

To install the software listed below, click on [ Caplio RR1 Software] on the initial screen.

Software	Description
Caplio Utility	This software enables you to save files recorded with the camera in the PC, or transfer files stored in the PC to the camera.
USB Driver	This software is required for using Caplio Utility and TWAIN Driver when the camera is connected to the PC by the USB interface.
TWAIN Driver	This software is for downloading still images recorded with the camera directly from the TWAIN application.

## ■ Browse CD-ROM

Click on [ Browse CD-ROM] on the initial screen to display the folders contained in the CD-ROM. To install the software, click on the installer in the appropriate folder.

Software	Description
<b>QuickTime Folder</b>	
QuickTime 4 (Be sure to install this software)	This software is required to view motion pictures recorded with the camera.
<b>MGI Folder</b>	
MGI PhotoSuite	This software is a well-rounded photo editing package that delivers extensive multimedia file playback and online imaging service support.



- For further details, refer to the Readme or PDF file for the software.

# System Environment

The following system environment is required to use Caplio Utility.

<b>Operating system</b>	Windows 98/98SE Windows Me Windows 2000
<b>PC</b>	PC on which the above operating system is pre-installed and which is equipped with a USB port whose operation is guaranteed by the PC manufacturer
<b>CPU</b>	Pentium or later
<b>Memory</b>	Windows 98/98SE: 32 MB or more (96 MB recommended) Windows Me: 64 MB or more (96 MB recommended) Windows 2000: 128 MB or more (256 MB recommended)
<b>Available HD space for installation</b>	Windows 98/98SE: 10 MB or more Windows Me: 10 MB or more Windows 2000: 10 MB or more
<b>Display resolution</b>	640 × 480 dots or more (800 × 600 dots or more recommended)
<b>Display colors</b>	256 or more (65000 or more recommended)
<b>CD-ROM drive</b>	CD-ROM drive compatible with the above PC
<b>USB port</b>	USB port compatible with the above PC
<b>Sound</b>	Sound blaster compatible with the above operating system, or interchangeable sound card and speakers

**Note**

- You can display images with 256 colors, but reproduction is greatly improved with 65,000 colors. You are therefore recommended to use 65,000 colors or more if possible.

# Installing the Software

This section explains how to install the necessary software, such as Caplio Utility, USB Driver for connecting the camera to a PC, and QuickTime. Exit all other applications before following the procedures below to install the software.

Note

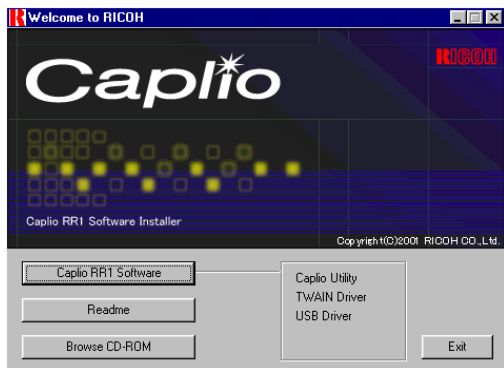
- If you start up Windows and connect the camera to the PC before installing the software, the [Add New Hardware Wizard] screen will be displayed. If this happens, click on [Cancel] and proceed to install the software after Windows is up and running.
- This section explains the installation procedure by the standard installation method. Users who are familiar with PCs and digital cameras may choose to specify the software they wish to install.
- For Windows 2000, users with administrator rights should login first before installing the software.

---

## 1 Turn the PC on and start up Windows.

---

## 2 Insert the CD-ROM supplied with the camera in the CD-ROM drive. The initial CD-ROM screen will be displayed.



---

## 3 Select [Caplio RR1 Software].

The installer will start up and the language selection screen will be displayed after a short time.

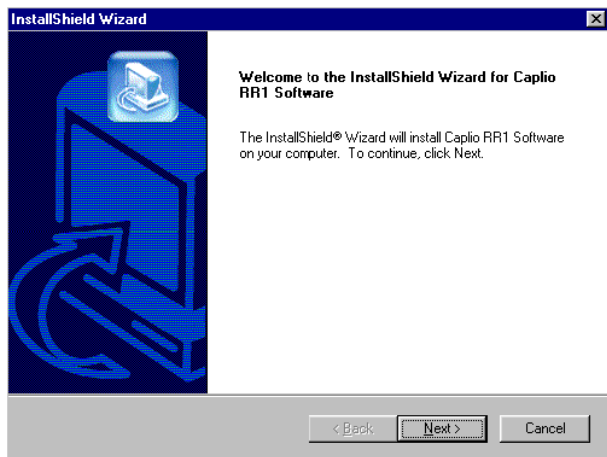
---

#### 4 Select [OK].



---

#### 5 Select [Next].



---

#### 6 Confirm the destination and select [Next].

To install the software in a different folder other than that displayed, select [Browse...] and choose the destination.

---

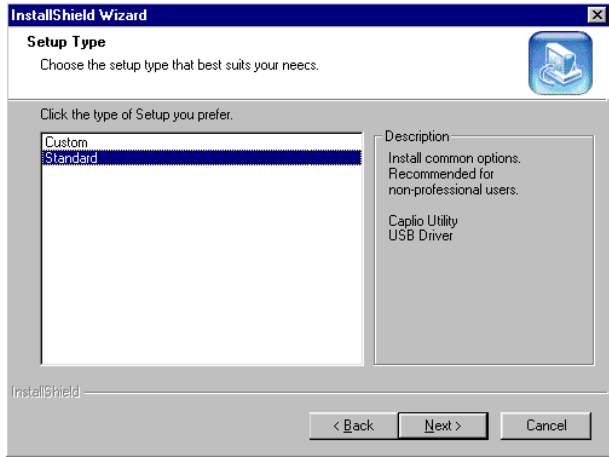
#### 7 Select [Standard] and then select [Next].

[Standard]

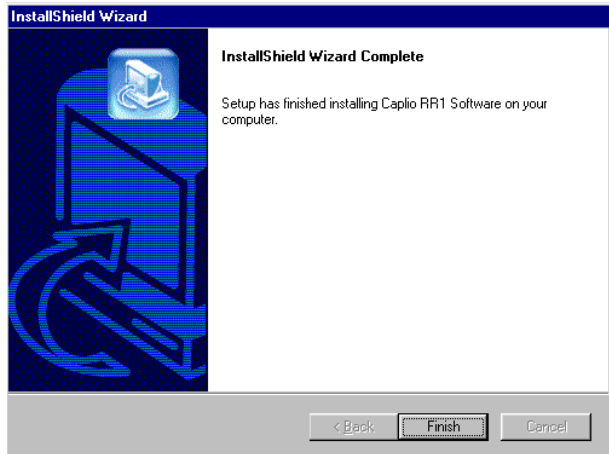
Caplio Utility and USB Driver will be installed.

## [Custom]

If you select [Custom] on the [Setup Type] screen in Step 7, the [Select Components] screen will be displayed. Select only the software you want to install.



- 8 Follow the instructions to continue installation and select [Finish] on the InstallShield Wizard screen.



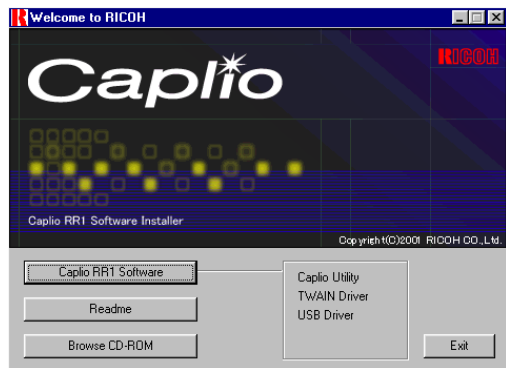
Installation is completed.

## ■ To Install QuickTime

QuickTime is required for viewing motion pictures recorded with the camera.

- 1 Turn the PC on and start up Windows.**
- 2 Insert the CD-ROM supplied with the camera in the CD-ROM drive.**

The initial CD-ROM screen will be displayed.
- 3 Select [Browse CD-ROM].**



The contents of the CD-ROM will be displayed.

- 4 Double click on the [QuickTime] folder.**
- 5 Double click on [QuickTime Installer].**

Installation of the QuickTime software will start.
- 6 Proceed in accordance with the instructions displayed on the screen.**

Note

- If QuickTime 4.1.2 is already installed in your PC, this operation is not required.

# Uninstalling the Software

You can delete all the software that has been installed. To reinstall the software, follow the uninstallation procedure first before installing the software again.

## Important

- Exit all active applications and save important data before uninstalling the software.
- Disconnect any other USB equipment or Plug and Play devices connected to the PC.

## Note

- If you connect or disconnect the camera to or from a PC using the USB cable before installing the USB Driver, the PC may not recognize the camera. In this case, delete the USB Driver from the system and then reinstall it.

## ■ To Delete the Caplio RR1 Software

You can delete all the software that has been installed from Caplio RR1 Software, such as Caplio Utility and USB Driver.

---

**1 Turn the PC on and start up Windows.**

---

**2 Click on [Start] on the Windows task bar.**

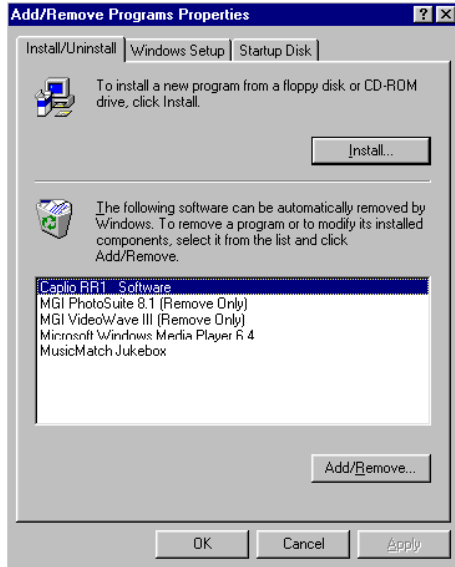
---

**3 Move the pointer to [Settings] and select [Control Panel].**

The control panel will be displayed.

---

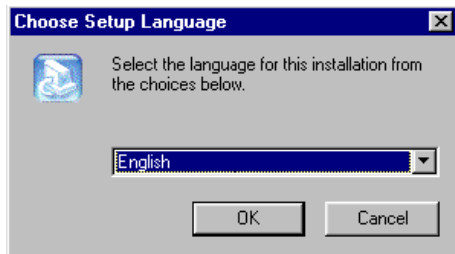
#### 4 Double click on [Add/Remove Programs].



The Property screen for adding and removing programs will be displayed.

---

#### 5 Select [Caplio RR1 Software] and click on [Add/Remove...].



The language selection screen will be displayed.

---

#### 6 Click on [OK].

The screen for confirming file deletion will be displayed.

---

#### 7 Click on [OK].

Deletion will start. When deletion is completed, a message will be displayed.

---

## 8 Click on [Finish].



- During Step 6, a confirmation dialog for deletion of shared files may appear. This dialog appears when the displayed shared file is not being used by any other program on the system. Although deleting the file will not corrupt the system, select [No to All] if you are unsure.
- To delete all shared files not being used by the system, select [Yes to All].
- If the “Uninstall completed. Some items could not be deleted.” message is displayed in the Remove Program from Computer dialog, select [Details] to check the items that could not be deleted and manually delete the items related to the Caplio RR1 Software application. When reinstalling, the software may not install properly if items related to the application are left in the PC.
- If the “Locked File Detected” message is displayed during the uninstall procedure, select [Restart] and proceed the uninstallation.

# Chapter 2

## Connecting the Camera to a PC

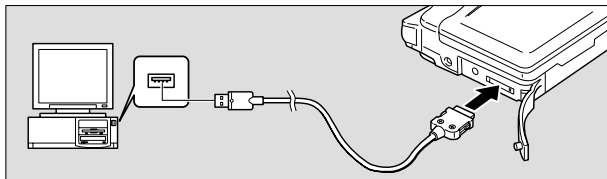
This chapter explains how to connect the camera to a PC using the USB cable in order to send and receive files.

2

Connecting the Camera to a PC

### Connecting the Camera to a PC using the USB Cable

- 1 Turn the PC on.
- 2 Check that the camera is turned off and connect the AC adapter to the camera.
- 3 Connect the USB cable to the DIGITAL(USB)terminal on the camera and the USB port on the PC.



#### 4 Turn the camera on.

The camera is now in connection standby status.

Note

- If the power cuts out during operation, the camera and the PC may be adversely affected. You are therefore recommended to avoid powering the camera by the battery and to use the optional AC adapter.



# Chapter 3

## Using Caplio Utility

This chapter explains how to use Caplio Utility. Caplio Utility enables you to save files recorded with the camera in the PC, and transfer files from the PC to the camera.

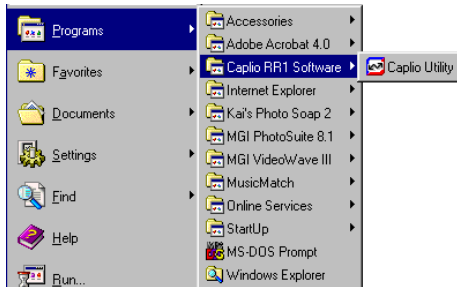
### Starting and Exiting Caplio Utility

This section explains how to start and exit Caplio Utility.

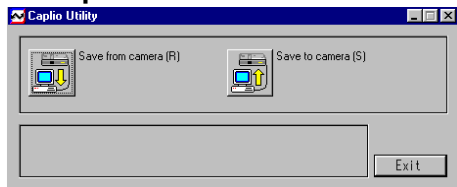
#### Starting Caplio Utility

When you want to use Caplio Utility, start it from the Start menu by the following procedure.

- 1 Click on [Start] on the Windows task bar. Move the pointer to [Caplio RR1 Software] under [Programs] and select [Caplio Utility].



- 2 Caplio Utility will start up, and the Caplio Utility window will be displayed on the desktop.



## Exiting Caplio Utility



To exit, perform the operation below.

### 1 Click on [Exit] on the Caplio Utility window.

The Caplio Utility window will close.

## Functions of the Caplio Utility buttons

The buttons on the Caplio Utility windows have the following functions.

 Save from camera (R)	Saves files in the camera to a PC. ▶ See “Saving Files in the Camera on the PC” (p.17).
 Save to camera (S)	Transfers camera files saved in the PC to a camera media. ▶ See “Transferring Files From the PC to the Camera” (p.19).
Exit	Exits Caplio Utility. ▶ See “Exiting Caplio Utility” (p.16).

## Saving Files in the Camera on the PC

(Camera → PC)

You can save image, sound and motion picture files recorded with the camera to a specified folder on the PC.

Check that the camera is properly connected to the PC before proceeding.

### Note

- To avoid the names of saved files being overwritten, consecutive file names are assigned and the files are saved in the specified folder.
- Whenever possible, use the AC adapter and avoid powering the camera by the battery. If the power cuts out during operation, the operation will have to be performed again.
- Do not connect or disconnect the AC adapter or USB cable when the camera is turned on or data is being transferred. The camera or PC may be adversely affected.
- Files are recorded by the camera in the following formats. Still image files: Exif2.1 (\*.JPG); non-compressed files: TIFF-YUV(TIF); text files: TIFF-MMR (\*.TIF); motion picture files: AVI(\*.AVI); sound files: WAV (\*.WAV).

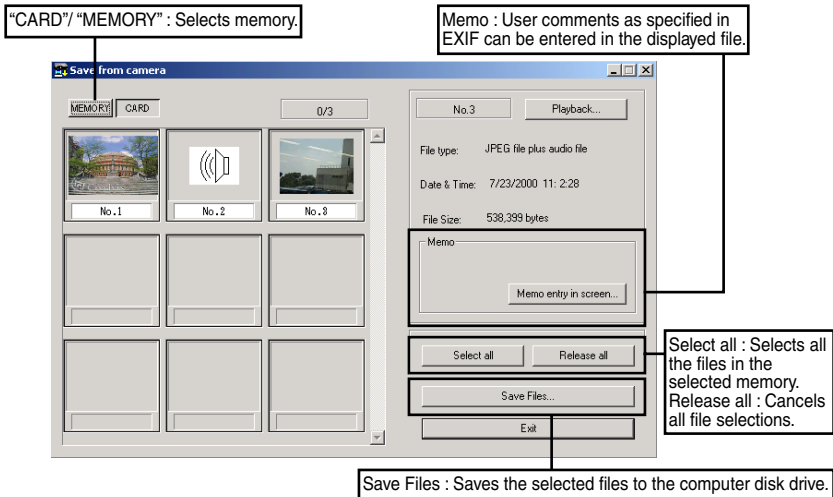
### Saving from the camera using the [Save from Camera] button

You can save files in the camera on the PC by using the Caplio Utility “Save from Camera” button.

#### **1** Check that the camera is properly connected to the PC.

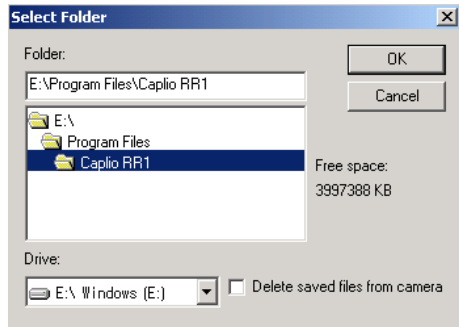
▣ See “Connecting the Camera to a PC using the USB Cable” (p.13).

#### **2** Click on the [Save from Camera] in the Caplio Utility window. The [Select files] dialog will be displayed.



**3 Choose the thumbnail from the file list and click on the [Save Files].**

**4 Select the drive and folder where you want the files to be saved.**



Click on [OK] and the files in the camera will be saved in the specified folder.

# Transferring Files From the PC to the Camera

(PC → Camera)

You can transfer files recorded with the camera from the PC to the camera. Check that the camera is properly connected to the PC before proceeding. Uploading refers to the process of transferring a file from the PC to the camera. You can transfer image, sound and motion picture files from the PC to the camera by using the Caplio Utility [Save to Camera] button.

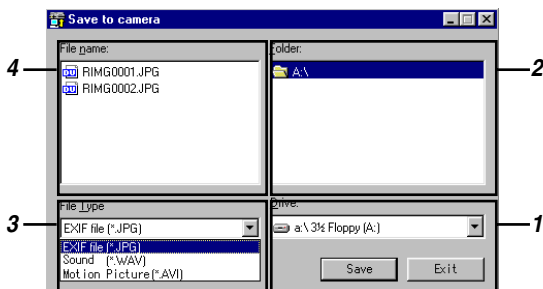
## Transfer using the [Save to Camera] button

To transfer files in the PC to the camera, perform the operation below.

- 1 Check that the camera is properly connected to the PC.**
- 2 Click on the [Save to Camera] button in the Caplio Utility window. The [Save to Camera] dialog will be displayed.**

Only EXIF files (\*.JPG), sound files (\*.WAV), and motion picture files (\*.AVI) recorded with the camera can be transferred.
- 3 Select the drive and folder where the files that are to be transferred are located.**

When you select the type of file, files of the specified type will be displayed.



- 1. Drive**

Selects the drive where the file to be transferred is located.
- 2. Folder**

Selects the folder where the file to be transferred is located.
- 3. File Type**

When the file type is selected from [File Type], only files of the selected type are displayed in the window.

#### 4. File List

A list of filenames available for transfer within the specified folder is displayed. Specify the file you want to transfer.

---

### **4 Select the files to be transferred and click on the [Save].**

The specified files will be transferred from the PC to the camera.

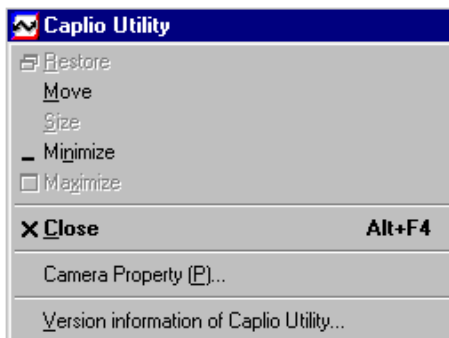
## Other Functions (Camera Property)

### Name of the photographer (Camera Property)

When the camera is connected to the PC, you can enter the name of the photographer in the camera.

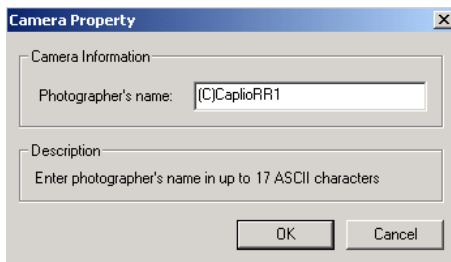
#### 1 Click on in the Caplio Utility window.

The Caplio Utility menu will be displayed.



#### 2 Select the [Camera Property...].

The [Camera Property] dialog will be displayed.



#### Note

- You can enter the name of the photographer using up to 17 ASCII characters.

#### 3 Check that the name of the photographer is correct and select [OK].

The name of the photographer is now set.

## Entry Memo

Memos can be entered in image files.

---

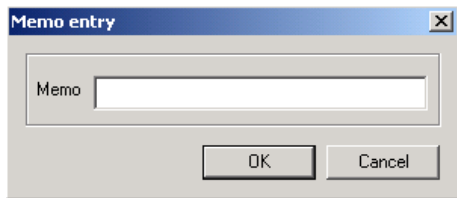
### 1 Click on the [Copy from Camera] button in the Caplio Utility window.

The Select File dialog will be displayed.

---

### 2 With a single file specified, click the [Memo Entry in screen...] button.

The [Memo entry] dialog will be displayed.



---

### 3 Enter the memo

A memo of up to 20 ASCII characters can be entered in the specified file.

---

### 4 Select [OK].

The memo is entered in the image file.

### When the Camera Does Not Work Correctly

If the camera is not functioning normally, follow the procedure below. Follow the steps below in order and check whether the necessary preparations have been performed correctly.

#### 1. Power supply

- Is the camera on?
- Is the AC adapter correctly connected to the camera or inserted into the electrical outlet?

#### 2. USB cable

- Is the USB cable properly connected to the camera and PC?
- It is recommended that the USB cable be connected directly to the USB port of the PC without the use of a HUB, etc.

#### 3. Installation of USB driver

Has installation of the USB driver been completed successfully?

▣ See “Installing the Software” (p.6).

If the camera still does not function normally after checking that all of the above are working properly, try the following.

1. Check the COM port setting. (Windows 98/98SE, Windows Me)
2. Delete the Caplio RR1 Software (USB driver) and reinstall.  
▣ See “Reinstalling Caplio RR1 Software (USB Driver)” (p.25).

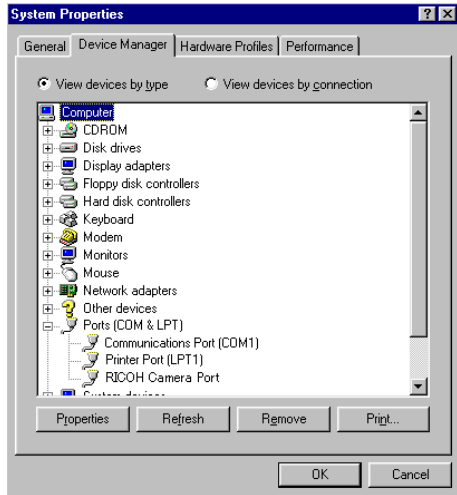
# COM Port Settings for Windows 98/Me

The USB Driver for Windows treats the camera as (virtually connected to) the COM port. For Windows 98/Me, if the COM port conflicts with other equipment, the camera may fail to be detected even when the driver has been correctly installed. In this case, change the COM port by the following procedure.

## 1 Connect the camera to the PC using the USB cable and turn the camera on.

## 2 Start the device manager.

Select [Settings] → [Control Panel] from the [Start] button. Double click on the [System] icon in the window that opens. Select the [Device Manager] tab from the [System Properties] dialog box, and open [Ports (COM&LPT)] from the list.



Set [RICOH Camera Port] from [Ports (COM&LPT)] and click on [Properties].

## 3 Change to another COM number (COM 5 -9) on the [Port Select] screen.

An asterisk [\*] will be attached to the port that is used by the camera.

## Reinstalling Caplio RR1 Software (USB Driver)

### Restoring the device when recognized as an unknown device

If the device is recognized as an unknown device and not as the proper device, such as when inserting/removing the USB cable before installing the driver or when canceling installation before it is completed, delete the driver using the procedure below and reinstall.

#### ■ Before uninstalling

- Exit all active applications and save important data.
- Disconnect any other USB or Plug and Play devices.

---

**1** Connect the camera and PC using the USB cable and turn the camera on.

---

#### **2** Display the Device Manager.

##### ● Windows 98 (98SE)/Windows Me

From the [Start] button, select [Settings] → [Control Panel] → [System] → [Device Manager].

##### ● Windows 2000

From the [Start] button, select [Settings] → [Control Panel] → [System] → [Hardware] → [Device Manager].

---

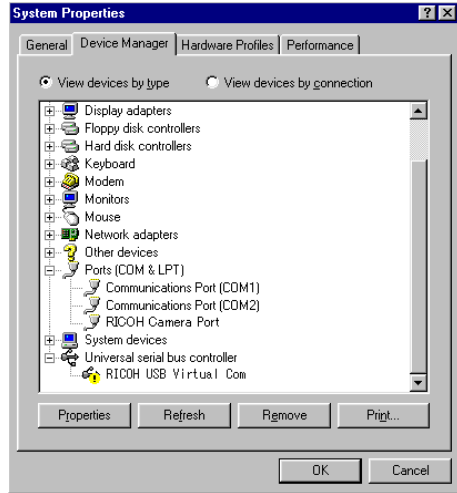
**3** Check whether there is a “!” mark (unknown device) on the left of [RICOH USB Virtual Com] under [Universal Serial Bus Controller] or [RICOH Camera Port] under [Ports (COM&LPT)].

---

**4** Select the device with the “!” mark and click on [Remove].

---

When the confirmation dialog appears, click on [OK].



- Even when deleting the successfully installed driver, delete both [RICOH Camera Port] under [Ports (COM&LPT)] and [RICOH USB Virtual Com] under [Universal Serial Bus Controller].
- For Windows 2000, only [RICOH Camera Port] is displayed under [Ports (COM&LPT)] on the Device Manager.

---

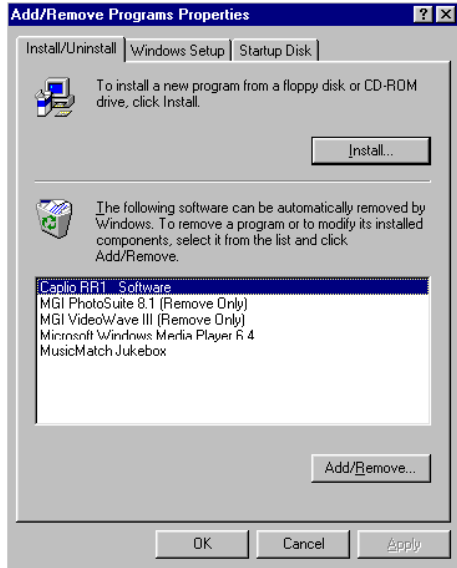
## 5 From [Control Panel], double click on the [Add/Remove Programs] icon.

The Property screen for adding and removing programs will be displayed.



- Perform “Add/Remove Programs” only after deletion from the Device Manager, has been performed.

---

**6** Select [Caplio RR1 Software] and click on [Add/Remove...].

A confirmation message for deletion will be displayed.

---

**7** Select [Yes].

---

**8** Turn the camera and PC off.

---

**9** Turn the PC on, insert the CD-ROM in the CD-ROM drive and reinstall the software.

▣ See “Installing the Software” (p.6).

---

**10** After checking the USB cable connection, turn the camera on.

When the camera is detected by the PC, the “New Hardware” window will open and construction of the driver database will start.

Wait until the construction of the database is completed.

The USB Driver setup is completed when the message disappears.



- The display for constructing the database appears only when connecting for the first time. The display will not appear for later connections.